

# Council of Principal Investigators May 11, 2016

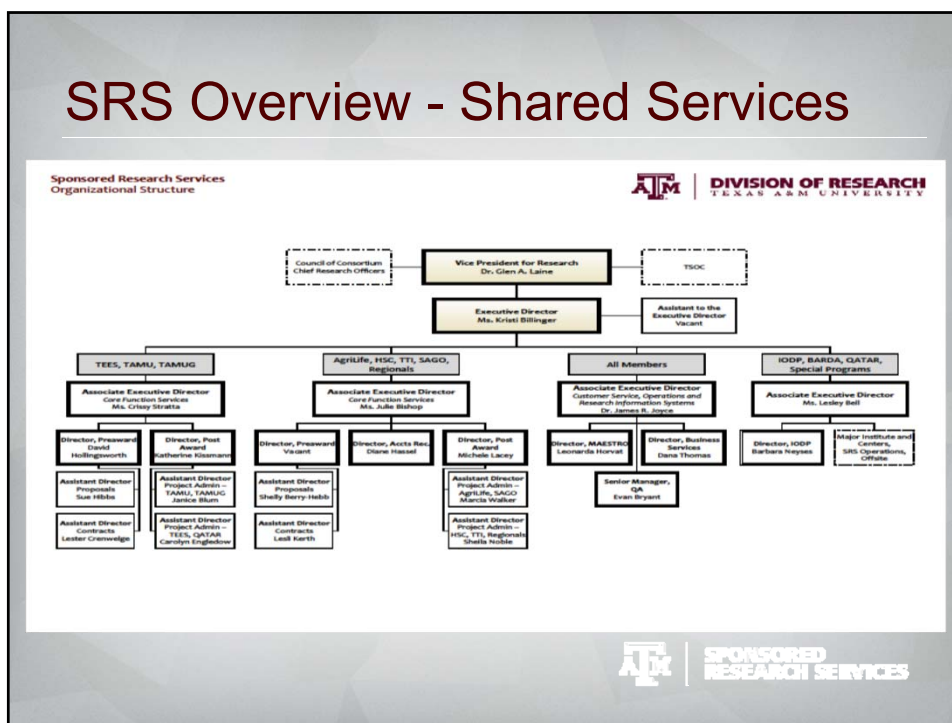


# Sponsored Research Services

**Kristi Billinger**  
**Executive Director**



## SRS Overview - Shared Services



## Assignments as of 04/04/16

### Introduction of Associate Executive Directors

- Ms. Crissy Stratta – TEES, TAMU, TAMUG
- Ms. Julie Bishop – AgriLife, HSC, TTI, SAGO, Regionals
- Dr. James Joyce – All members for customer service, Operations and Research Information Systems
- Ms. Lesley Bell – IODP, Major institutes and Centers, SRS Operations, Offsite

## Priorities

---

- Return of the Project Administrator
  - One point of contact
  - Handles all aspects of the project
- Award Set Up Team
  - Timely set up of awards
  - Data integrity
- Metrics
- Employee turnover



## Outreach

---

- Faculty meetings
- Department meetings
- System Member leadership meetings
- Others by invitation



## Contact Information

---

Kristi Billinger – [kristib@tamu.edu](mailto:kristib@tamu.edu) 979-845-8673

Lesley Bell – [lbell@tamu.edu](mailto:lbell@tamu.edu) 979-845-7864

Julie Bishop – [jbishop@tamu.edu](mailto:jbishop@tamu.edu) 979-458-8760

Jim Joyce – [jrjoyce@tamu.edu](mailto:jrjoyce@tamu.edu) 979-458-5852

Crissy Stratta – [cstratta@tamu.edu](mailto:cstratta@tamu.edu) 979-458-8452



---

## Thank You

---

