



# Council of Principal Investigators Meeting

*Dr. Karen Butler-Purry  
Associate Provost and Dean*

*Texas A&M University Graduate and Professional School  
12/8/2021*

## Overview

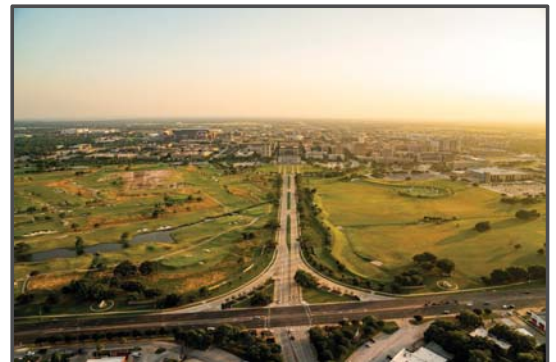


**TEXAS A&M**  
UNIVERSITY

**Graduate and Professional School Updates**

**DEI-Related Resources Pls Might Tap Into**

**International Student Questions**





## Graduate School Updates

Shift to a Graduate and Professional School



TEXAS A&M  
UNIVERSITY



TEXAS A&M UNIVERSITY  
Graduate and  
Professional School



Graduate and Professional School

# Vision, Mission and Values



TEXAS A&M  
UNIVERSITY

## Vision

Be a globally-recognized leader in student-centered graduate and professional education at the forefront of innovation, diversity, and excellence.

## Mission

The Graduate and Professional School collaborates with graduate faculty, academic leaders and staff throughout the University to advance academic excellence, champion equity, and support student success.

## Values

- **Innovative excellence:** Enable transformative scholarship, research, and education that improves Texas, the nation and the world
- **Diversity, equity, and inclusion:** Value people's unique identities and backgrounds, foster a learning environment where all can thrive, and strengthen a sense of belonging for all students.
- **Student centeredness:** Promote student health, well-being, and success in all we do.
- **Collaborative community:** Work collectively with all graduate faculty, staff, programs, schools, and offices to achieve common goals.

Graduate and Professional School

# Strategic Priorities



TEXAS A&M  
UNIVERSITY



Attract  
Exceptional,  
Diverse Graduate  
and Professional  
Students



Ensure Student  
Wellbeing and  
Meaningful  
Experiences



Foster  
Outstanding  
Graduate  
Programs  
throughout the  
University



Enrich a Graduate  
and Professional  
School Culture of  
Continuous  
Improvement and  
Innovation

Graduate and Professional School

## Goals of Engagement with Graduate Directors Network



TEXAS A&M  
UNIVERSITY

- Regular, two-way communication with the Graduate School
- Sharing of local and national best practices
- Foster local network of Graduate Directors
- Professional development and support for new Graduate Directors
- Met October and November 2021



Graduate and Professional School

## Technology Enhancements

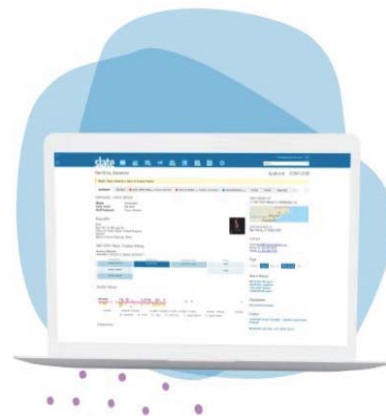


TEXAS A&M  
UNIVERSITY

DocuSign

A screenshot of the DocuSign 'Enter Recipients' Information' form. The form has a title bar with a close button. It contains a list of recipient roles with dropdown arrows: Graduate Program Assistant, Committee Chair, Committee Member 1, Department Head or Intercollegiate Faculty Chair, and Graduate Program Assistant. At the bottom, there are two buttons: 'FINISH' and 'VIEW DOCUMENT'.

Slate CRM



Graduate and Professional School



# Strategic Marketing and Brand Awareness



TEXAS A&M  
UNIVERSITY

Excellence is an Aggie standard. Earn your graduate degree, get hands-on industry experience and make an impact on the world.



TEXAS A&M UNIVERSITY  
Graduate and  
Professional Studies

ADMISSIONS.TAMU.EDU

**Transformation Starts Here. Accomplish the Impossible.**

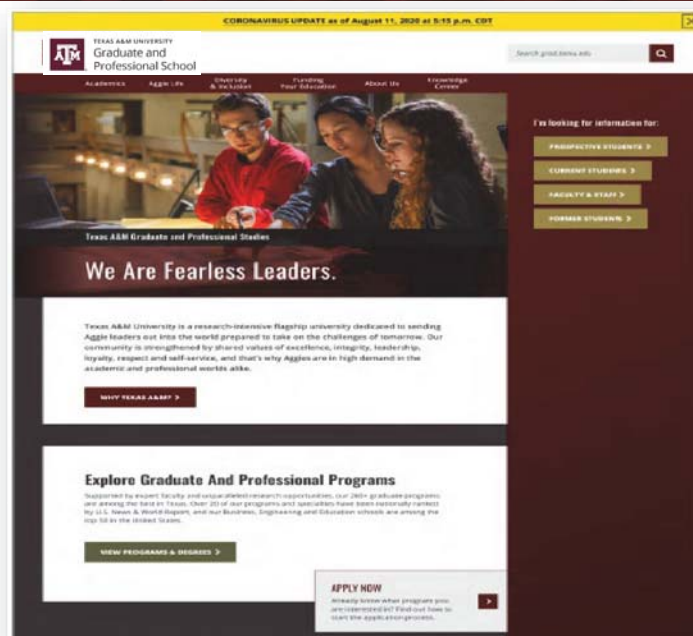
[Learn More](#)

Graduate and Professional School

## New Website



TEXAS A&M  
UNIVERSITY



Graduate and Professional School

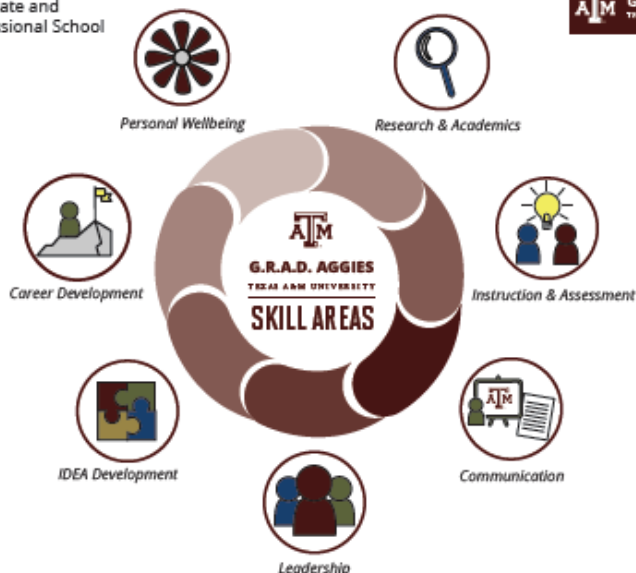
# G.R.A.D. Aggies



TEXAS A&M  
UNIVERSITY



TEXAS A&M UNIVERSITY  
Graduate and  
Professional School



Graduate Resources and Development for Aggies is a collaborative effort of:

- ✓ [Career Center](#)
- ✓ [Center for Teaching Excellence](#)
- ✓ [International Student Services](#)
- ✓ [Money Education Center](#)
- ✓ [Graduate and Professional School](#)
- ✓ [Counseling and Psychological Services](#)
- ✓ [University Libraries](#)
- ✓ [University Writing Center](#)
- ✓ [Graduate and Professional Student Government](#)

Graduate and Professional School

## Doctoral Student Profile and Feedback System



TEXAS A&M  
UNIVERSITY

**Students:** Build their profile in one, easy to manage platform for a variety of applications, including CV generation

**Faculty:** Access a comprehensive profile of students to enable efficient review and better feedback

**Administrators:** Customize data collection for reporting and program enhancement



Uses Interfolio  
F180 and RPT  
functions

[doctoralprofile@tamu.edu](mailto:doctoralprofile@tamu.edu)

Graduate and Professional School

TEXAS A&M  
UNIVERSITY®



**TEXAS A&M**  
UNIVERSITY®

Graduate and Professional School

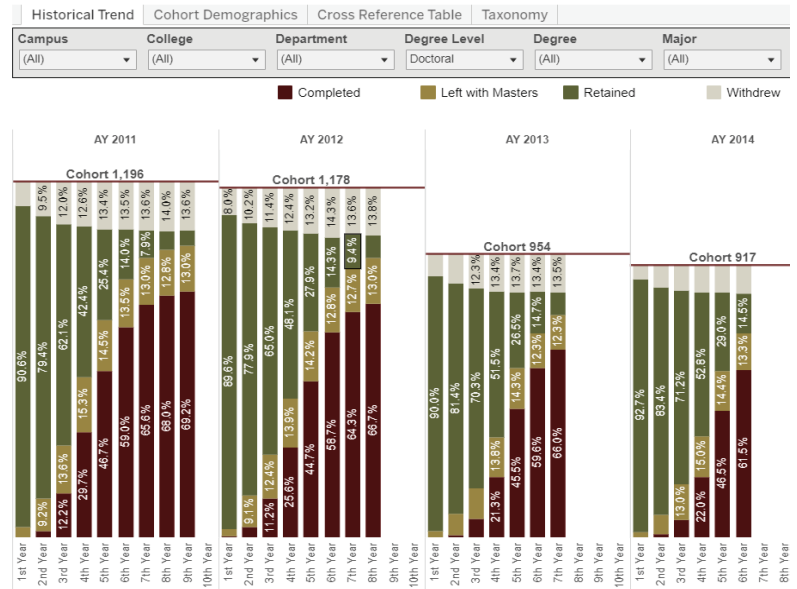
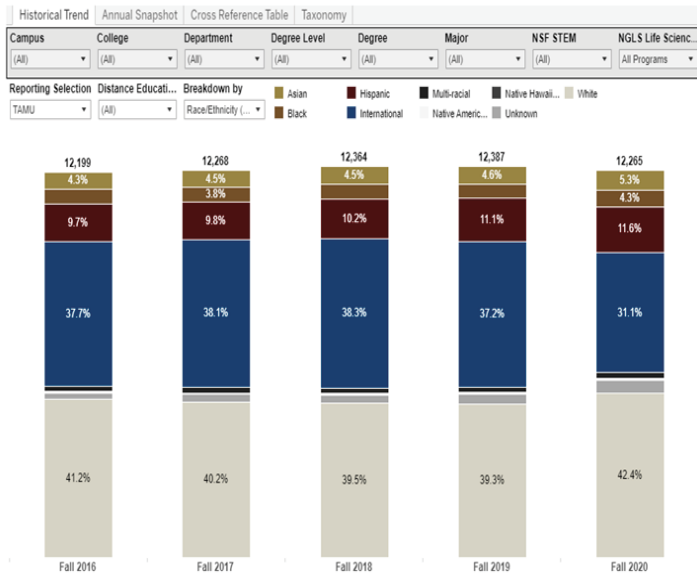
# Graduate and Professional Student Dashboards



TEXAS A&M  
UNIVERSITY

## Graduate Enrollment Demographics

## Graduate Completion Rates



Graduate and Professional School



## DEI-Related Resources



## Fellowships and Programs



TEXAS A&M  
UNIVERSITY

**Dr. Dionel Avilés '53 and Dr. James Johnson '67 Fellowship Program**

**Pathways to the Doctorate Collaboration Grant**

**Pathways to the Doctorate Collaboration Fellowship**

**Early Graduate Admissions Program**



Graduate and Professional School

## Recruitment



TEXAS A&M  
UNIVERSITY

**National Conferences**

**Regional Conferences and Institutional Partnerships**

**Memberships and Name Exchanges**



Graduate and Professional School

# University-Wide Collaborations



TEXAS A&M  
UNIVERSITY

**Graduate Mentoring Academy**

**Graduate Student Campus Climate Survey**

**Professional Development Opportunities**

**Life Science Recruiting Symposium**

**Student Equity Experiences (SEE) Coordinator**  
**[New Position]**



Graduate and Professional School

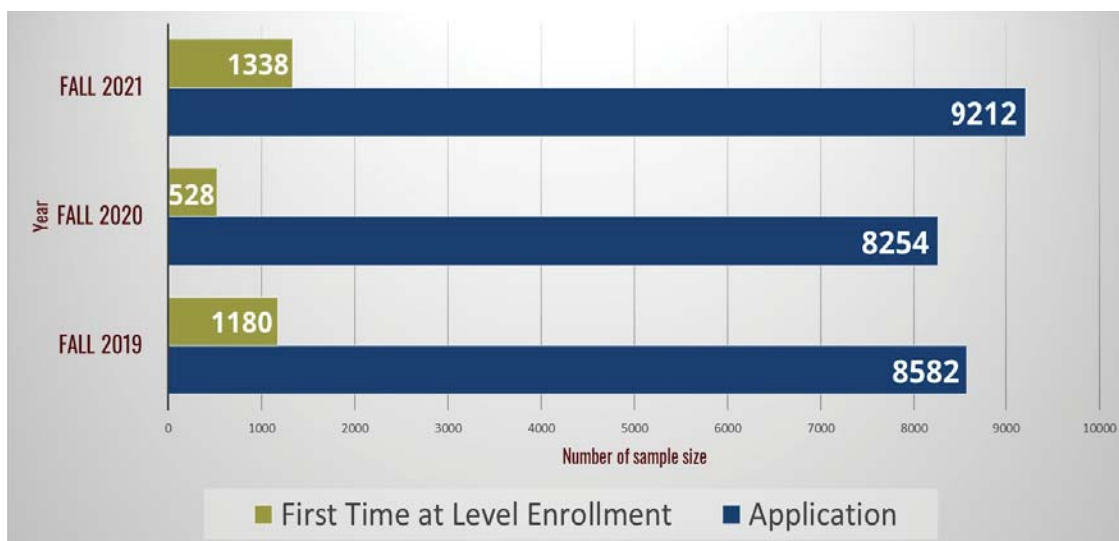


International graduate student applications and enrollment, fall 2019, 2020 and 2021

## International Graduate Applications & New Enrollment



TEXAS A&M  
UNIVERSITY

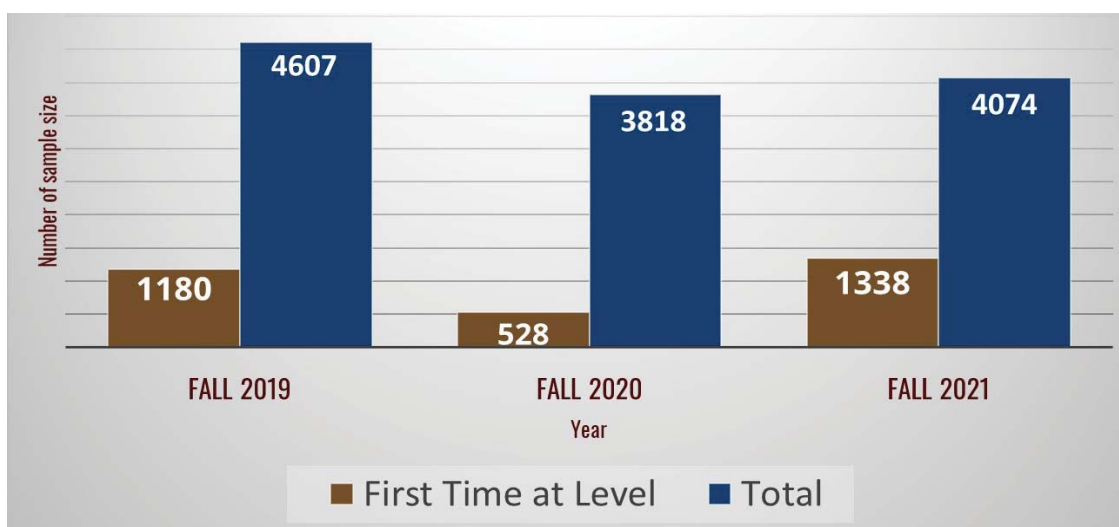


Graduate and Professional School

## International Graduate Students New and Total Enrollment



TEXAS A&M  
UNIVERSITY

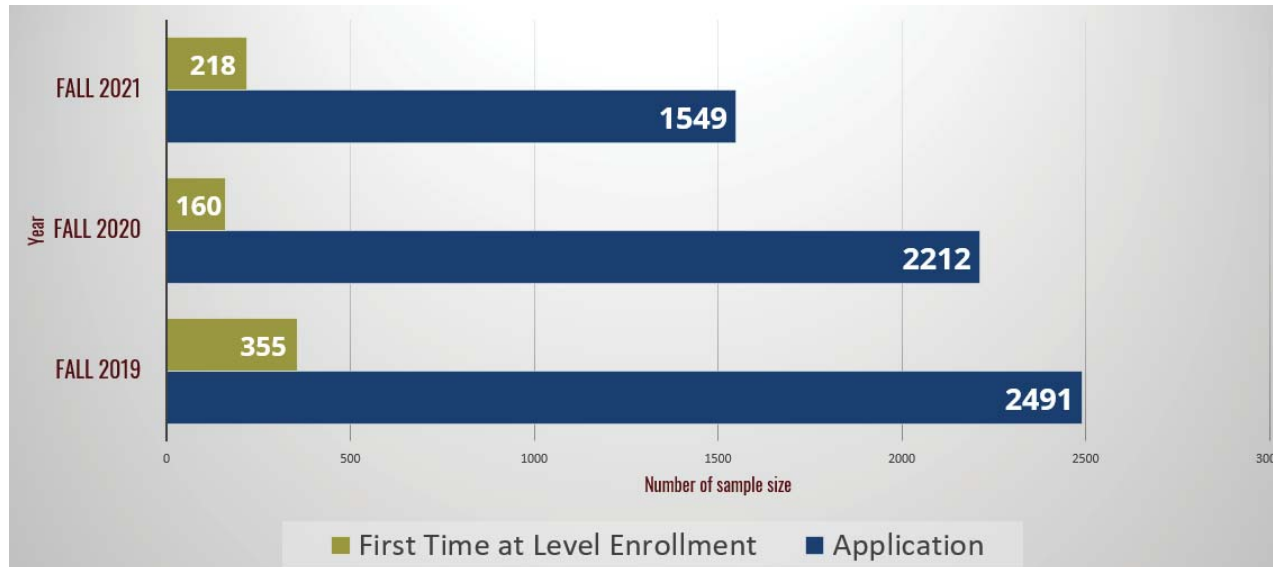


Graduate and Professional School

## International Graduate Students from China Application & New Enrollment



TEXAS A&M  
UNIVERSITY



Graduate and Professional School

## Current Int'l Regulations and Potential Impact on Chinese Graduate Students (current and future)



TEXAS A&M  
UNIVERSITY

- Waning interest from Chinese students is a result of U.S. visa restrictions on Chinese students, an increase in anti-Asian racism in the U.S. amid the pandemic, and rising tensions between the U.S. and China
- China Initiative –
  - Led by the DOJ National Security Division (NSD)
  - “In addition to identifying and prosecuting those engaged in trade secret theft, hacking, and economic espionage, the Initiative focuses on protecting our critical infrastructure against external threats through foreign direct investment and supply chain compromises, as well as combatting covert efforts to influence the American public and policymakers without proper transparency.”<sup>1</sup>
- National decrease in Chinese graduate student enrollment
- Actions
  - Developing and promoting support services, welcoming environment, intercultural celebrations, and community for international graduate students
  - Diversify pool of international graduate students

[1] <https://www.justice.gov/nsd/information-about-department-justice-s-china-initiative-and-compilation-china-related>

Graduate and Professional School



## Visa

- Appointments limited or no appointments at some US Embassies and Consulates in countries experiencing high infection rates

## I20

- ISS -- 15 business day turnaround

Graduate and Professional School



## Contact Us

[grad.tamu.edu](http://grad.tamu.edu)

[grad@tamu.edu](mailto:grad@tamu.edu)

979-845-3631



@TAMUGradSchool

@TAMUGradSchool





## DEI-RELATED RESOURCES

---

### Dr. Dionel Avilés '53 and Dr. James Johnson '67 Fellowship Program

<https://grad.tamu.edu/Buttons/Funding-Opportunities/Aviles-Johnson-Fellowship-Program>

The Dr. Dionel Avilés '53 and Dr. James Johnson '67 Fellowship Program seeks to increase diversity in the graduate and professional student population at Texas A&M and support the development of high achieving scholars who show promise of distinguished careers for the benefit of all students. The deadlines for submitting Avilés-Johnson Fellowship nominations are 5 p.m. CDT, **February 1, 2022** (doctoral nominations\*) only) and **March 1, 2022** (master's and 2nd round of doctoral nominations\*).

#### Eligibility

- US citizen or permanent resident
- Superior academic record
- Meet one or more of the following:
  - belong to gender, racial or ethnic groups historically under-represented;
  - have attended a MSI for at least 2 years of UG degree or have UG conferred degree from MSI;
  - disability;
  - veteran; or
  - come from a disadvantaged background

*\*Departments/Interdisciplinary Degree Programs must identify which round they wish to submit Doctoral nominations by Monday, January 24, 2022 at: <https://tx.ag/AvilesJohnson>. Doctoral nominations may not be submitted to both rounds.*

---

### Pathways to the Doctorate Collaboration Grant

<https://grad.tamu.edu/Buttons/Funding-Opportunities/Pathways-to-the-Doctorate-Grants>

The Pathways to the Doctorate Collaboration Grants supports mutually beneficial collaborations that will increase the application, acceptance, and timely graduation of students from underrepresented populations in Texas A&M University graduate and professional programs. These efforts seek to address a report from the Presidential Commission on Diversity, Equity, and Inclusion finding that Hispanic, LatinX, and Black and African American graduate student enrollment percentages are underrepresented when compared to the state's demographics. Three proposals were funded in the first round. Subsequent rounds will be available in January of each year through 2024.

### Pathways to the Doctorate Collaboration Fellowship

<https://grad.tamu.edu/Buttons/Funding-Opportunities/Pathways-to-the-Doctorate-Grants>

The Pathways to the Doctorate Fellowships provide collaboratively funded support for four years of doctoral study at Texas A&M. Fellowships are intended to promote mutually beneficial relationships between faculty, departments, and programs at Texas A&M and other institutions. These relationships should foster meaningful collaborative partnerships that create a sustainable pipeline for students from targeted underrepresented populations to enter doctoral programs at our institution while providing adequate

support to students to ensure retention, timely graduation, and career success. More information, and a full RFP, can be found at [here](#). The deadline for nominations is March 15, 2022.

---

### **Early Graduate Admissions Program**

<https://grad.tamu.edu/PROSPECTIVE-STUDENTS/Admissions/Early-Graduate-Admissions-Program>

Early Graduate Admissions (EGA) is open only to summer undergraduate research students who are participating in a structured research group (REU, USRG, etc.) at Texas A&M University and will graduate in May 2023. Students who apply will know if they have been admitted to the University in September 2022. The program provides an expedited review process for participating departments and interdisciplinary programs.

---

## **RECRUITMENT**

Diversity equity, and inclusion is a key value of the Graduate and Professional School. As such, there are a number of recruitment efforts that we engage in to increase the number of high-quality diverse graduate students that matriculate into Texas A&M University. In addition to the efforts noted below, the Graduate and Professional School allocates \$1 million to the colleges, for recruitment efforts, including college-wide or other efforts to bring students to campus. For those interested in connecting to these efforts, please let us know.

### **National Conferences**

- Society for the Advancement of Chicanos/ Hispanics & Native Americans in Science (SACNAS)
- Annual Biomedical Research Conference for Minority Students (ABCRMS)
- California Forum for Diversity in Graduate Education
- National GEM Consortium
- National Society of Black Engineers (NSBE)

### **Regional Conferences & Institutional Partnerships**

- Texas Swing
  - The Texas Swing calendar is a collaborative effort between the TACRAO Graduate and Professional School committee and TxGAP to help coordinate and organize information about graduate and professional school recruiting activities in Texas and New Mexico.
- Texas National McNair Research Conference
- Florida A&M University (FAMU) Feeder Program
- Prairie View A&M University (PVAMU)
  - The most recent initiative under the MOA is a **course exchange** agreement. This initiative will allow a student at PVAMU or TAMU to take a graduate course at the other institution. This effort will expand options for students and allow our institutions to capitalize on strengths. Piloted in fall 2021, the initiative is currently under development to determine which courses will be offered and advertised to students. It is anticipated that the initiative will be approved sometime in spring 2022 with offerings by fall 2022.
  - The [Joint PVAMU-TAMU Professional Development Series](#) is a collaboration within the Texas A&M University System, between the Graduate and Professional School at Texas A&M University – College Station and the Office of Graduate Studies at Prairie View A&M



University, in an effort to expand the opportunities available to our graduate and professional students and strengthen our ties between universities.

### **Memberships and Name servs**

- National Name Exchange (NNE)
    - A consortium of 55 nationally known universities which annually collect and exchange the names of their talented and underrepresented ethnic minority students in an effort to increase the enrollment of traditionally underrepresented peoples in graduate education.
  - TRIO McNair Scholars Directory
    - Provides graduate schools with access to TRIO McNair Scholars who have expressed an interest in pursuing graduate studies and contains records of recent graduates, seniors, and rising seniors. The TRIO Ronald E. McNair Post-Baccalaureate Achievement Program is the single largest federal effort aimed at preparing low-income, first-generation in college and minority students to pursue graduate studies.
- 

## **UNIVERSITY-WIDE COLLABORATIONS**

### **Mentoring Academy**

<https://grad.tamu.edu/New-Current-Students/Graduate-Student-Mentoring>

The Graduate and Professional School recognizes that there are many drivers and influences on graduate and professional students and their education. Our goal is to ensure that every student is well-supported throughout their graduate education journey. We have created the Graduate Mentoring Academy to support excellence in graduate and professional students through workshops, training, resources, and tools for students, faculty, and staff who are engaged in all aspects of graduate and professional education.

### **Graduate Student Campus Climate Survey**

<https://grad.tamu.edu/New-Current-Students/Campus-Climate-Survey>

The Graduate and Professional School regularly facilitates an assessment of the graduate student campus climate, based on the directives of the Texas A&M University Diversity Plan (Office of the Vice President and Associate Provost for Diversity, 2009) and goals identified in Vision 2020: Creating a Culture of Excellence (Vision 2020). The University Diversity Plan comprises three elements: accountability, climate, and equity.

### **Professional Development Opportunities**

<https://grad.tamu.edu/Buttons/Professional-Development-Opportunities#>

The Graduate and Professional School strives to promote and expand opportunities for graduate students to engage in professional development activities that will prepare them for their future careers- whether in academia, industry, government, non-profit organizations or elsewhere. These activities help graduate students develop professional skills to complement the discipline specific knowledge gained in their degree program. The Graduate and Professional School has identified seven key skill areas for graduate student professional development to guide programming and resources.

### **Life Science Recruiting Symposium**

The Life Sciences Recruiting Symposium brings 9 TAMU life sciences departments and programs together where prospective graduate students can meet faculty, staff, current students, and visit the TAMU campus. In addition, current students have the opportunity to share their research during a poster session. The 2022 Life Sciences Symposium will take place on February 11-12, 2022 at the Texas A&M Hotel and Conference Center and Kyle Field.

**Student Equity Experiences (SEE) Coordinator [NEW POSITION]**

The Graduate and Professional School is seeking a **Student Equity Experiences (SEE) Coordinator** to lead our efforts to be an exemplar of strengthening diversity, uplifting equity, and honoring inclusion. This position will be responsible for new and existing activities, programs, and services with the goal of fostering inclusiveness and belonging for individuals from communities historically excluded and marginalized.

**For additional information or details on how to connect, please contact Dr. Shannon D. Walton at [shannon@tamu.edu](mailto:shannon@tamu.edu).**

# Call for Faculty Judges

## 17<sup>th</sup> Annual Texas A&M University System Pathways Student Research Symposium

### Save the Date!

Noon Thursday, March 3<sup>rd</sup> – Noon Friday, March 4<sup>th</sup>, 2022  
College Station, TX  
Kyle Field and Memorial Student Center

The [2022 Pathways Student Research Symposium](#) is approaching fast, and the Grad School would like to recruit your help to serve as a judge. The event will take place on Thursday, March 3<sup>rd</sup> and Friday, March 4<sup>th</sup>, 2022, on the campus of Texas A&M University in College Station.

The Pathways Student Research Symposium is open to all [Texas A&M University System](#) students with separate categories for undergraduate, masters, and doctoral level research. The symposium provides students the opportunity to showcase their research efforts, network with faculty, gain exposure to graduate and post-graduate opportunities, and form lasting collaborative relationships for future research. The event rotates annually among the different Texas A&M University System institutions. This year, the flagship in College Station gets to showcase our campus and student research.

**Please consider serving as judges for undergraduate, master's and doctoral posters, oral presentations, and five-minute research elevator pitches for the symposium.**

In addition to supporting student research, participating as a judge represents an opportunity for networking with faculty and students from Texas A&M and all 10 other Texas A&M System Universities. Another benefit of serving as a judge is that it gives you the opportunity to recruit undergraduate and master's students to your master's and doctoral programs or to build relationships with students whom you have extended admissions offers who may not have finalized their grad school plans.

**Please save the dates on your calendar and join us as a judge** for this exciting event to connect students, faculty, and staff and strengthen the Texas A&M University System research community. The judging registration will open in January 2022. Look for an announcement in early January.

Thanks for your support of this important Texas A&M University Systems event.