

Introducing iLab Solutions for Core Facilities

Clare A. Gill

Faculty Fellow – Core Facilities

clare-gill@tamu.edu

CPI Meeting
January 11, 2017

NIH Definition

“Core facilities are centralized shared research resources that provide access to instruments, technologies, services, as well as expert consultation and other services to scientific and clinical investigators. The typical core facility is a discrete unit within an institution and may have dedicated personnel, equipment, and space for operations. In general, core facilities recover their cost, or a portion of their cost, of providing service in the form of user fees that are charged to an investigator's funds.”

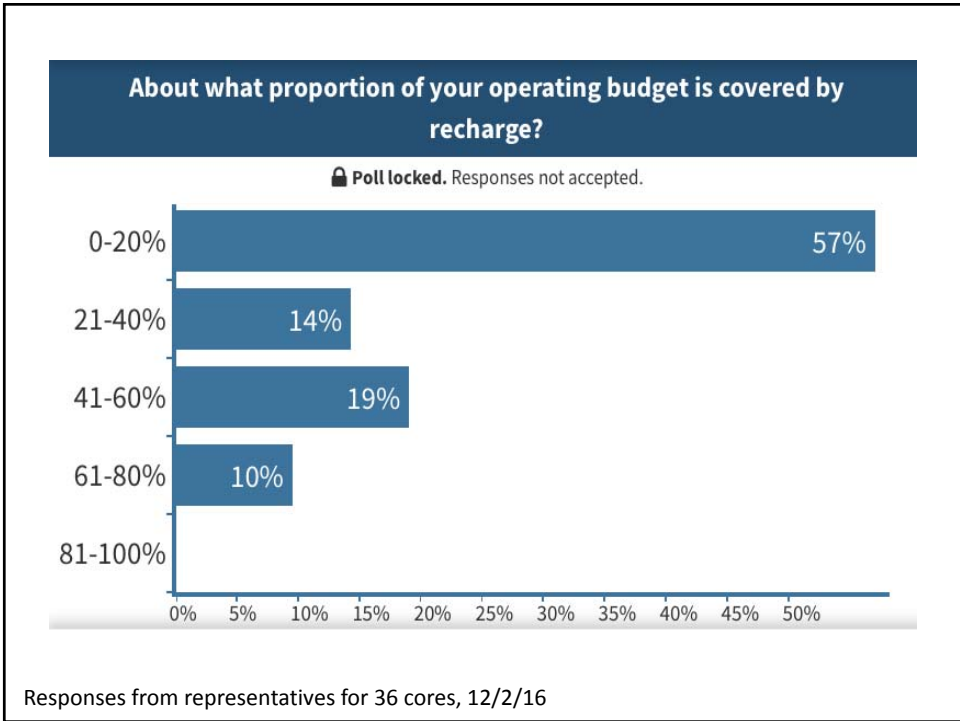
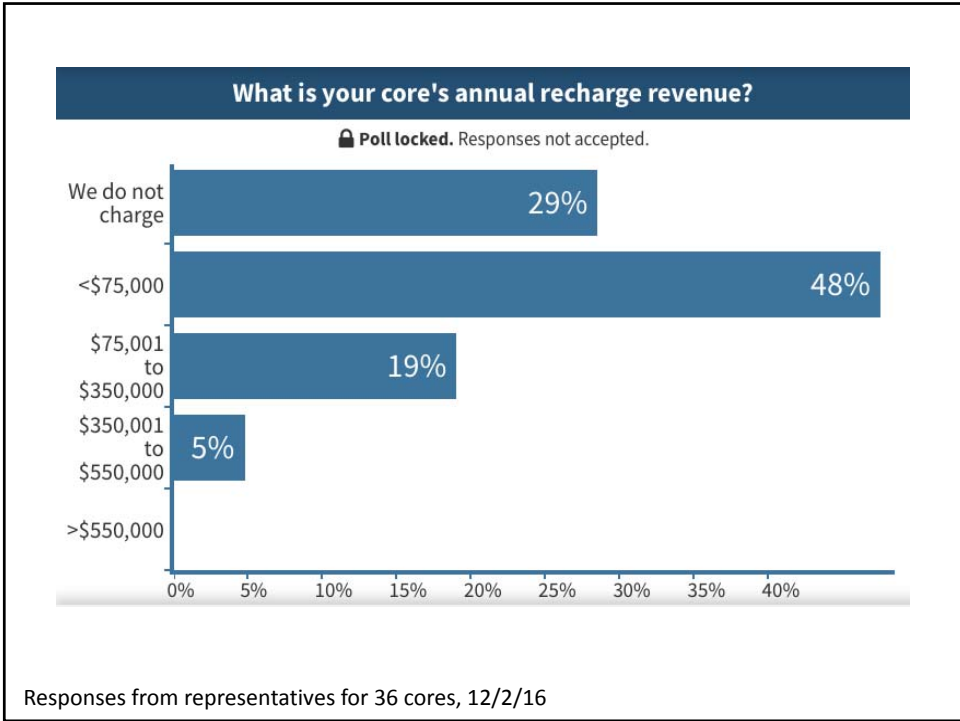
https://grants.nih.gov/grants/policy/core_facilities_faqs.htm#3597

Top 10 NIH Funded Institutions FY2016	Web Presence for Cores	Dedicated Admin	Advisory Committee	Guidelines	Online Scheduling	Expo
Johns Hopkins University	Centralized	Yes	Yes	Yes	Yes	Yes
University of California San Francisco	Centralized	Yes	Yes	Yes	Yes	
University of Michigan	Distributed				In progress	
University of Pennsylvania	Centralized	Yes	Yes	Yes		Yes
University of Pittsburgh	Focused	Yes			Yes	
Stanford University	Focused	Yes			Yes	
University of North Carolina – Chapel Hill	Focused	Yes	Yes	Yes	Yes	Yes
Yale University	Focused				Yes	
University of Washington	Distributed				Some	
University of California Los Angeles	Centralized				Some	

<https://report.nih.gov/award/index.cfm>

Core Facilities TAMU and Affiliated Agencies

- Determined by web mining and input from URC Deans
- 110 self-described core facilities
- 87 cores with a website and contact information
- Tremendous heterogeneity
 - Full service
 - Self service
 - Business models
 - Access
- Directors' listserv established
 - CORE-FACILITIES-DIRECTORS@LISTSERV.TAMU.EDU
- Centralized list of core facilities is now available
 - Highlighted on Division of Research homepage
 - Also on Resources page: <http://vpr.tamu.edu/resources>



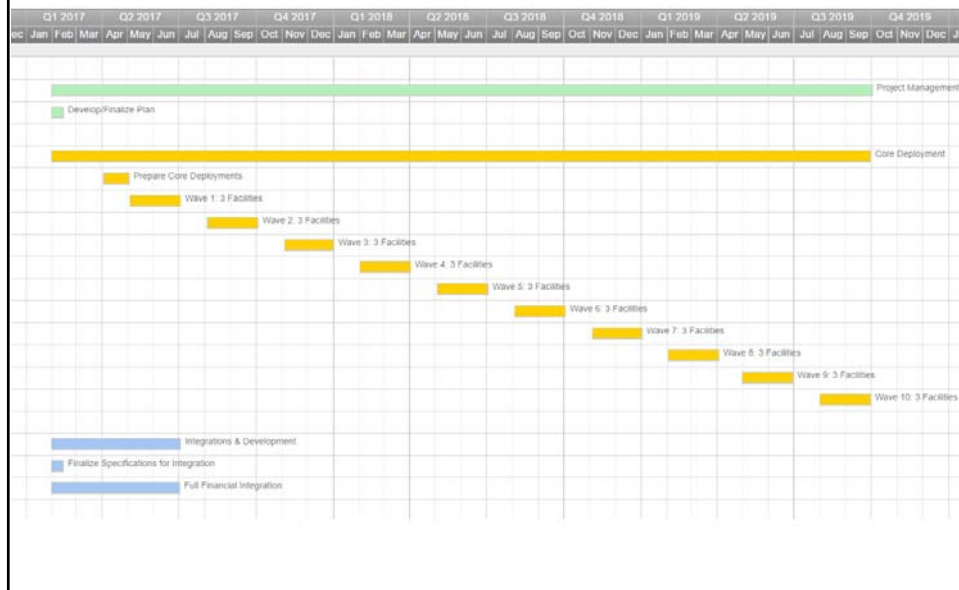
iLab Solutions

- Web-based core facility management tools
 - Cores can post available services, equipment, prices, control who can access the core, track requests, and bill customers
 - Researchers can identify and reserve equipment or services and track status of requests
 - Administrators can produce revenue and equipment usage reports.

- Piloted in one core

- Institutional Site License for 30 cores
 - Core Facility Management Module
 - Identity Management Integration [DONE]
 - Full Financial Integration

Project Plan



Priority for iLabs Queue

1. Core has received a review from a funding agency requiring such a system be used
1. Core has received RDF support or continuing support from DOR
1. Core billing ranked highest to lowest amongst interested cores
2. For early waves, simplicity of work flows
3. Co-location of cores in the same building for ease of communication